



**BROOKES**  
**BROOKES IMPLEMENT CO.**  
 DEALER OF NEW & USED EQUIPMENT  
 SALES, SERVICE, AND RENTAL OF BOBCATS

N17949 Hwy. 53      **Brookes Smith**  
 Galesville, WI 54630      (608) 582-2146

**IF YOU DON'T DEAL WITH US  
 WE'VE BOTH LOST.**

*Did you know...  
 Galesville Excavating is  
 located on the Upper Table ?.* 

**Galesville Excavating  
 Plumbing, Heating & A/C**

20645 West Gale Avenue  
**608-582-2084**

Monday-Friday  
 7:30am-3:30pm  
**24 Hour Answering Service**

**I always get fast, quality service  
 at Critzman's.**

**Critzman Auto Body**  
*On the Square  
 Downtown Galesville*  
**608-582-4019**  
**Critzman's**

**Serving the community  
 for over 30 years.**

**Upcoming Events  
 at the Manor**

- \* **Friday, August 15th - 10:30 -**  
*New Entertainer: Dale Blanshan*
- \* **Saturday, August 16th - 3:00 -**  
*Music by The White Tornado*
- \* **Tuesday, August 19th - 10:30 -**  
*Entertainment by Ed Wilber*
- \* **Wednesday, August 20th - 2:30 -**  
*Music Study Club performs*
- \* **Saturday, August 23rd - 3:00 -**  
*Music by Ken Larson*
- \* **Monday, August 25th - 6:45 -**  
*Ryan Herman performs*
- \* **Wednesday, August 27th - 2:30 -**  
*John Ofstedahl sings*
- \* **Friday, August 29th - 2:15 -**  
*Monthly Birthday Party - Bill Graff  
 entertains*
- \* **Saturday, August 30th - 2:30 -**  
*Music by Russell Glomstad,  
 Frances Foss and Gary Lee*



**When Beverly Emmons Nemitz brought her granddaughter to piano lessons,** she handed me a couple of photos and wondered if I'd be interested in using them. The answer, "Hold on, and I'll go scan them in right away." It is Caledonia School 1956-1957.

Front Row: Rodney Gilmeister, Bobby Arnold, Jim Schindler, Bruce Pickering, Arlys Storsven, Russell Pickering, Bonnie Cooper  
 Middle Row: Ken Meunier, Mark Hess, Beverly Emmons, Richard Meunier, Bing Cooper, Esther Selke  
 Back Row: Diane Becker, Gary Meunier, Joan Lyon, Jon Hess, Ruthie Jonas, Lesley Bender, Billy Byrne, Mrs. Grover, Susan Carhart

**Remember Handwoven Rugs?  
 They are still available from**

**Roadside Weaving**  
**Leona Foss**  
 N25686 Hwy 53  
 Ettrick, WI 54627  
**608-525-4891**

**Handwoven Rugs  
 Placemats-Table Runners**

**Ettrick Express Mart**  
*Looking to serve you*

**608-525-2820**  
**Open 24 Hours**

Bananas, Lettuce, Tomatoes  
 Onions, Frozen Hamburger  
 Need something we don't have?  
**Just let us know!**  
 BP Gas and Diesel at the pumps



**You never know how The  
 Chat works .....**

I could hardly wait to open an email with a subject of "Rose Cottage Photo". I was curious to see the photo, but even more curious to know who sent it.

"Hi Robyn, Phil Palzkill mentioned that you are looking for a picture of the Rose Cottage which was located near the boat landing at Perrot State Park. We were able to find a picture which I have attached. It was taken by a photographer with the last name Pond - we do not have a first name. It was taken on 11-08-1934.

We do have some other historical pictures of the park from the late 1930's which you might be interested in. It has been great to see how many pictures are out there in the community and how open people have been in sharing them with you. It would be nice to have an exchange of these type of pictures between interested parties to help us tell the stories and document the history of Perrot and the surrounding area for local residents as well as the many people who visit each year. .... Thanks for all of the work you do."

*S / Lois Larson - Ranger-Operations, Great River State Trail , Buffalo River State Trail, Perrot State Park Work Unit, Wisconsin Department of Natural Resources*

**Slender You**  
 608-582-3022  
 Mon—Friday 5am—7pm  
 Saturday 5am—6pm  
 Closed on Sunday

Downtown Galesville up from the Karate Studio across from the Mortuary  
 Pick up a form at "The Treasure Chest" on the Square—Downtown Galesville  
**\$30 / Month—No membership fee**

**Duffy's** 

Womens, Mens, and  
 Couples Leagues

**Sign Ups for Fall Taken Now!**  
 (Individual and/or Teams)  
**582-4870**

Call for special summer  
 rates and times  
 Reserve Party Dates Now !

Remember when.....  
 Jean's was located on the square?

**Jean's Stylist Salon**  
*Located on the Flat in Galesville*  
 16812 So 2nd St—Galesville, WI  
**608-582-2717**  
**Open: Tues, Thurs, Fri, Sat**

Nikken Products  
 Massage—Available—Appt. Only  
 Reiki—Appt Only

**Rainbow Restaurant**  
 N30798 Hwy 53 — Blair

**Open at 5:30am-7 Days a Week**  
 Breakfast served 'til 11am

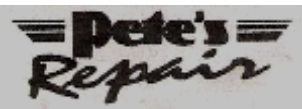
Sandwiches—Steaks  
 Home Made Pastry  
 Luncheon Specials—Full Dinner Menu  
 Dine In or Carry Out  
**Family Owned Since 1977**  
**(608) 989—2003**

**Online Ordering  
 For Promotional Material**  
 www.SeversonAndAssociates.com

 **Marketing,  
 Training,  
 Seminars  
 Promotional  
 Material**

**The Marketing Skills Of  
 Severson & Associates  
 Can Help Your Business Grow!**  
**608-582-4328**

Visit the 50% off area!  
**The  
 Treasure Chest**   
*On The Square  
 Downtown Galesville*  
**582-3022**  
**Tues thru Sat—til 5pm**  
*Gifts & Home Decorating Items,  
 Large Selection of Antiques*



**AUTO BODY AND AUTO SALES**  
 U.S. Hwy 53—Galesville  
 608-582-4480

- Free Estimates • Collision Repair
  - All Insurance Work Welcome
- "We can save you the Customer, Money"*  
 Pete and Cheryl McKeeth



Specializing In:

- Home Remodeling \* Stampcrete
- New Construction • ICF Concrete
- Concrete Walls & Walkways

www.brucereedycorstruction.com  
 16859 S. 1st Street Galesville  
 Phone: (608)39Reedy(397-3339)

**Operation Christmas Child**



We are starting our 11th year of bringing Christmas gifts to needy boys & girls in many countries thru this project of Samaritans Purse.

I want to thank those of you who have already been bringing your shoe boxes and bags full of gifts to my back porch. Without your continued help, these children would not know that we care for them.

The people of Trempealeau Community and our surrounding area have been a great help in making this possible. All it takes is one more family to help one more child.

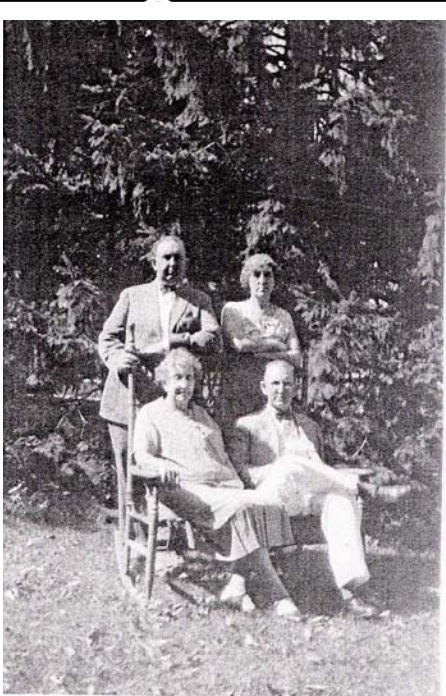
Thank you  
 Phyllis Wood -  
 24136 6th St \* Trempealeau  
 608-534-6605

**Did you know...**

Dave Tranberg has been installing telephones & telephone jacks for over 25 years and his work is guaranteed.

**Dave Tranberg Telephone Service**  
 534-6125

Reasonable & Guaranteed



**Back:**  
 Lee Utter, Edna (Mrs. Fred Graves)  
**Front:**  
 Retta Utter, Abbott Utter  
 Children of  
 Charles & Elizabeth Utter

(Photo courtesy of Barbara Homer Bublitz)

**Cadet Band of 1879**

With the celebration coming up this weekend of Johnny Clem, I thought it would be interesting to talk about the Galesville University Cadet Band. They were the ones that provided the music as Lieutenant Clem marched his young cadets around the grounds at Old Main.

I would sure like to find a photo of them other than the ones from the Alex Burr collection printed in the Galesville Centennial book.

The band was the second one in Galesville and perhaps the county, as they traveled around the area in the gaudy bandwagon.

The first band was formed around 1870. They had silver horns and like the craze back then, the horns went over the shoulder. The band, according E.F. Clark who was a member, traveled performed places including a boat cruise on Lake Superior where some of the members got sea sick. Some of the other members included Gus Davis, Albert Clark, Herman Bidwell, several of the Wilcox boys, and W.A. Wyman. I'm not sure when they disbanded.

As difficult as money was to come by for the University, I am amazed at the uniforms with their plumes, gold braid, brass buttons, and epaulets - their instruments and the Bandwagon they had. From what I've read, no expense was spared for the band. The bandwagon was compared to having all the brilliant decorations of a circus wagon. It was pulled by four horses that came from the local livery stable. I am sure the members probably changed but these are some of the long term members and the ones I could find information on . ....

**Walter S. Luce**

from Galesville, was the director of the band, he was known in the area as "Toot". You often see him in photos of local bands in this area. He was a printer and founded the La Crosse Daily Press

He played lead horn.

**John R. Ogden**

A veteran of the Civil War was in his 30's and the oldest member. He had a furniture store in Galesville and then moved to Black River Falls.

He played solo alto.

**Greenleaf "Green" Williamson**

A Galesville resident who's father was a stone mason, later owned a summer resort in Maine.

He played the snare drum.

**Edward Parker**

Was the son of M.B. Parker and I believe an Uncle to Herman Parker, Galesville.

He later moved to Medford. He played the B-flat cornet. .



**Frank Mead**

Was from Clark county where his father was a logger. Frank married the daughter of a preacher here with the last name of Sedgerbloom. They moved to Oregon. This is how the cadet uniforms looked. Frank played the piccolo.



**J. Ernest Tibbitts, known as "Tib"**

Was from Galesville. He was the youngest member of the band. He went to work for the government printing office, I believe in D.C., and ended up head of the department.

He played the E-flat alto trombone. An over-the-shoulder one looks like photo on the right.

**C.C. Chandler**

(some places listed as C.H. Chandler) Was a printer and worked for the old Luce print shop.

He married Mary Birchard and moved to Washington state. Chandler played the B-flat tenor.

**John Deakin**

Was a pharmacist and worked at the old Kneeland store.

The family came to Galesville in the 1870's from Milwaukee. His father took over the Commercial Hotel at that time.

He played the tuba.

**John Keizer**

Came from La Crosse County.

He was considered a live-wire during his time with the band. . He died when quite young.

John played the Bass Drum.



This is what an over-the-shoulder B-Flat Tenor horn looks like.

When it comes to moving ground, grading roads, or even making ponds call Jim Dezale ....

**JIM DEZALE EXCAVATING**  
 W13395 Dezale Lane  
 Ettrick  
 (608) 582-4189

- Excavators, Dozers, Earth Movers, Graders, Compactors



608-582-2281  
 Fax: 608-582-4877

**Sonic Motel**

W21278 Hwy 54 West  
 (Next to Wason's Supper Club)  
 Galesville, WI

Linda & Dave Baardseth - Owners/Operators  
 E-mail: sonicmot@trivest.net



**Does anyone know ...**

In the 1860's they played a game called "skittles " at the old Four Mile House..

In the 1940's some of the balls and pins were located that had been used during those early days They were put on display at the bowling alley in Galesville..

**Does anyone know where they are now??**

**Eden House**

Residence for Seniors

19441 Eden Drive \*Galesville, WI 54630

The base rate structure includes:

- 3 meals served each day
- heat, electricity and Cable TV
- private baths with walk in shower
- free laundry facilities
- Carpet and drapes \* Off street parking
- 24 hour emergency call system

For more information, or to schedule a personal tour, please call Sacia Andersen, Director of Social Service at Marinuka Manor (608) 582-2211.



**Bank of Galesville**  
 Generations of Service Est. 1883  
**Your Local Hometown Bank!**

**BANK OF GALESVILLE** 608-582-2233  
**BANK OF TREMPLEALEAU** 608-534-7780  
**SEVEN BRIDGES, HOLMEN** 608-526-6483

http://www.bankofgalesville.com

**Did you know....**

Robyn's Table Chat can be sent to anyone active in the armed forces for free?? Just get the info to me.

**FREE School Screenings for Children**  
 in Grades 1 through 8 at the ...

**Holmen Eye Clinic**

106 South Holmen Drive- Suite #6

Mon & Fri : 9 - 5; Tue & Thurs : 11-7  
 Wed: 8—Noon; Sat: 9—Noon

**608-526-1177**

Visit the website to find out more  
<http://www.HolmenEyeClinic.com>



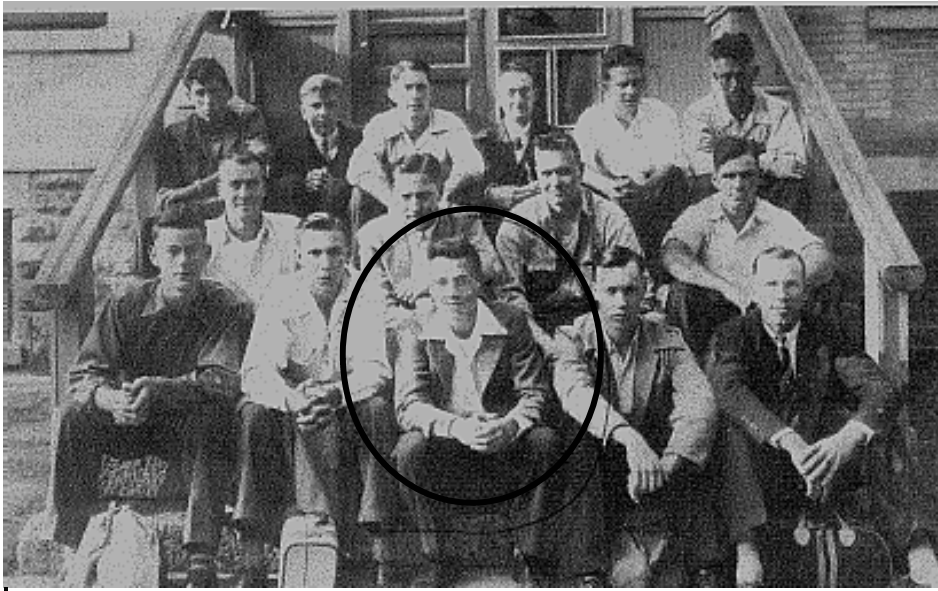
**N15721 Schubert Rd**  
**Galesville WI 54630**

Located just south of Universal Truck Eqpt.  
 Centerville, WI  
 608-539-2090

**Dyna Gro, Dekalb, NK, Mycogen**

- ◆ Corn, Soy Beans, Alfalfa, Wheat, and Rye seed available.
- ◆ Apple, Strawberry, and Raspberry containers and supplies
- ◆ Full line of Farm Chemicals
- ◆ Certified Crop Advisor on Staff





I was tickled when I went to the mail box and noticed a note from David Beadle. I opened it up on the way back into the house. Enclosed was this photo, taken in 1945. The note said ...."My brother is the one in the Leisure Suit (circle). I know there is a Tranberg on there. Maybe some of your sources can fill in some of the names. I'll find more (photos)!" I think it is men being inducted into the Military (?). Does anyone know any of the men in this photo?

**Call Robyn if you can help?**

I received this email "I love your site!! It is right up my alley. I am seeking data on my family tree. Looking for a family in Galesville noted in a 1950's obit of his mother and think there still maybe a line of them there. I am seeking the CHILDREN of a man named Joseph Bergerson, son of Jack and Mary Bergerson.. " I found your website online while researching your area and thought it was wonderful and took a chance you may know my BERGERSON family I am tracking. ... My mother was born a Berzinski in Arcadia township in the Oak Ridge area and had many sisters. When her father died her mother rewed a Bautch and had many more kids. Her mother was born a Bergerson, this is the line I am working on, I .. am doing Tamarack Valley area research of my Bergerson family history and tree, this is my grandmothers Olga Bergerson [Maiden] paternal line. Along with many of the people I have data on in this family, I have tracked my gt grandfather Tom Bergerson's brother, his name is Jack and Mary [Stoller] Bergerson moved about 1945 to French Creek Hollow and the 1956 obit of Mary[ Stoller] Bergerson notes a son Joseph Bergerson living at that time in 1956 in Galesville. I really would LOVE to hear from this line of the family in this area that I know who could be located if it is possible.....My mother told me many, many wonderful stories of her childhood from your area. s/ Tam...Bay City, WI

**School Starts August 25th**

**Announcements**

**The Trempealeau Pool** will be closed Monday, August 19th for the Life Guard trip to the Dells and the pool will close for the season Friday, August 22nd.

**The 2008 Annual Meeting**  
The Gale-Etrick-Trempealeau School District Budget Hearing and Annual Meeting will be held at the High School Library on **Monday, October 6, 2008 at 7pm**

**Galesville Public Library New Hours, Effective August 1st**  
There will be the same number of hours per week, but distributed differently.

MON & FRI: 10 am to 7 pm  
T, W, TH: 2 pm to 7 pm  
SAT: 9 am to 2 pm

**The Garden Club - Trempealeau** will meet on Wednesday, August 13<sup>th</sup> at 6:30 p.m. at the Community Center, 24455 3rd Street. All are welcome to join us!

**Spread The Word... G-E-T - 10 Year Class Reunion,** August 23rd -Saturday- 4pm - 7pm Cost \$5/person. Jailhouse Saloon, Centerville. G-E-T Class of 1998 Contact: Tianna (Hovre) Johnson 608-252-4460

**Friends of the Shirley Wright Memorial Library** will meet on Thursday, September 18, 7:00p.m. at the Library.

**Garage Sales**

**Galesville's City-Wide Garage Sale SATURDAY SEPT 6**

**Village of Trempealeau Fall Rummage Sale**  
Join us for fun, rummaging **SATURDAY SEPT 20, 2008**

If you would like to have your sale included on the flier, please submit your information to the Village Office by Friday Sept 12 you may drop off in person, fax 534-6280 or e-mail: trempla@centurytel.net

**FREE JOHNNY CAKE**

at lunch during Galesville's Victorian Fair and Johnny Clem pageant Saturday August 16. Just tell them you saw it in The Chat. The ball is at 7:00 p.m. August 15.

*Slow Down, Unwind, Soothe Your Soul*



Lunch Served 11am - 3pm  
Coffee Bar - Desserts  
Open Tuesday-Saturday 7:30am-4:00pm  
16846 Davis St \* Galesville  
**582-2669**



**Girls entering Kindergarten through 17 years of age are invited to attend Galesville-Etrick-Trempealeau Registration Night: Tuesday, August 19. 5:00 p.m. - 7:30 p.m.**

at the Trempealeau, Galesville & Etrick Elementary Schools during their open houses.

If you live or attend school within the G-E-T attendance area, we welcome you to come and find out what exciting things lay ahead for Girl Scouts in 2008-2009!

Find out more information by calling Jacque Severson, District Field Executive at Girl Scouts of Riverland Council (608)784-3693, Ext. 321 or e-mail [Jacquelyn-severson@centurytel.net](mailto:Jacquelyn-severson@centurytel.net)

*Watch for the insert in the next issue of The Chat on the Sept. 1st Opening of:*

**Ammo -n- Camo**

**I wondered just how many potatoes it would take as I read that in 1890 Dutton and McKeeth shipped a carload of potatoes to Chicago.**

**Does anyone know?**



Trempealeau County Alzheimer's Memory Walk  
Saturday, Sept. 6, 2008  
At 1:30 p.m.  
Pancake Breakfast 9-10:30 am  
Walk Registration 10:00 am  
Walk Begins at 11:00 am  
Starting at Mt. Calvary Lutheran Church, Trempealeau  
For more information, call Cindy Schultz (608)323-7484

**The New Sign in the Window....**

CHECK OUT THE FULL LINE OF DELICIOUS MEATS FROM **FALLS MEAT SERVICE, INC**

FROZEN FRESH MEATS  
Homemade Sausage  
Many Specialty Items

**At the Etrick Express**



"I've never seen anything like it.. You need to get a picture of it. 48" in diameter." That was the message on my machine from Alice Lebakken.. The cabbage filled up her wheelbarrow.

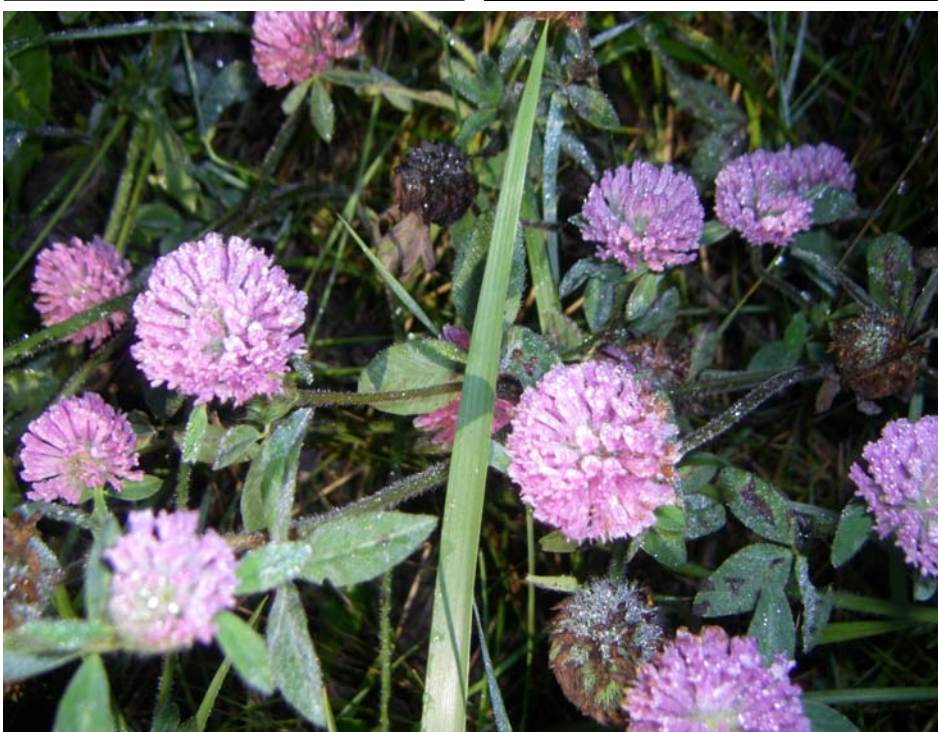
**NEW HOURS at the Coffee Attic in Trempealeau**  
Closed Sunday & Monday  
6-3 Tues - Friday  
7-3 Saturdays



24010 Third St., Suite 2  
**(608) 534-JAVA**

**The Restaurant Is Open**

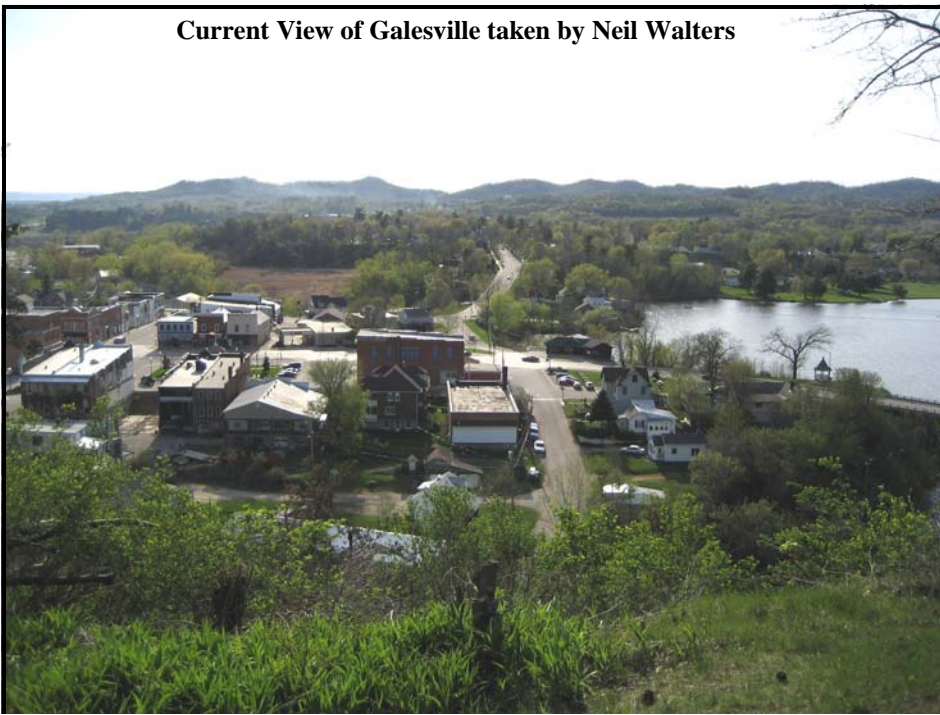
Serving Lunch 11-5  
Dinner 5-9 weekdays,  
5-10 weekends  
Live Entertainment  
Saturday Evenings @ 9pm  
\*Shuffle Board\*  
**THE HISTORIC TREMPEALEAU HOTEL**  
Main Street On The Mississippi  
**PHONE 534 - 6898**  
[www.trempealeauhotel.com](http://www.trempealeauhotel.com)



I was driving out to Centerville early one morning to deliver more Chats and I looked off to the right and one lone patch of fog was decorating the hillside. I turned onto the side road to take a picture, and stepped out of the car right beside a patch of clover.

**Down Home Cookin', Downtown Hixton**  
Handmade Jams, Specialty Sandwiches,  
Specialty Breakfasts,  
133 East Main Street  
Stop in and visit the Charles Family:  
Rich, Sue, Aaron and Nika  
715-963-4031





**Did you know ...The mill was once located in an area called "Tuckerville"?**

**Andersen Feeds, Inc.**  
*The Mill on Mill Road—Galesville*  
**608-582-2595**

Supplier of feed for birds, pets, horses, deer & wildlife.  
Also get feed ground for your cattle at **Andersen Feeds**

The oldest continually operating business in Galesville

**NOTICE**  
**TOWN OF TREMPEALEAU**  
**Regular Board Meeting**

A regular Board Meeting for the Town of Trempealeau will be held on **Thursday, August 14, 2008, at 6:30 p.m.** in the Town Office, W24854 ST RD 54/93. The agenda for the meeting will be posted near the door 24 hours prior to said meeting.

Doris A. Dahl, Clerk/Treasurer  
Town of Trempealeau

**Can you help??**

What do the following all have in common?

**Saltines, Orange Juice, Apple Juice, Pork & Beans, Canned Fruit, Jello, Canned Potatoes, Canned Peas, Canned Carrots, Brownie Mix, Cake Mix, Cookies.**

See page 5, Column 3 for the answer.

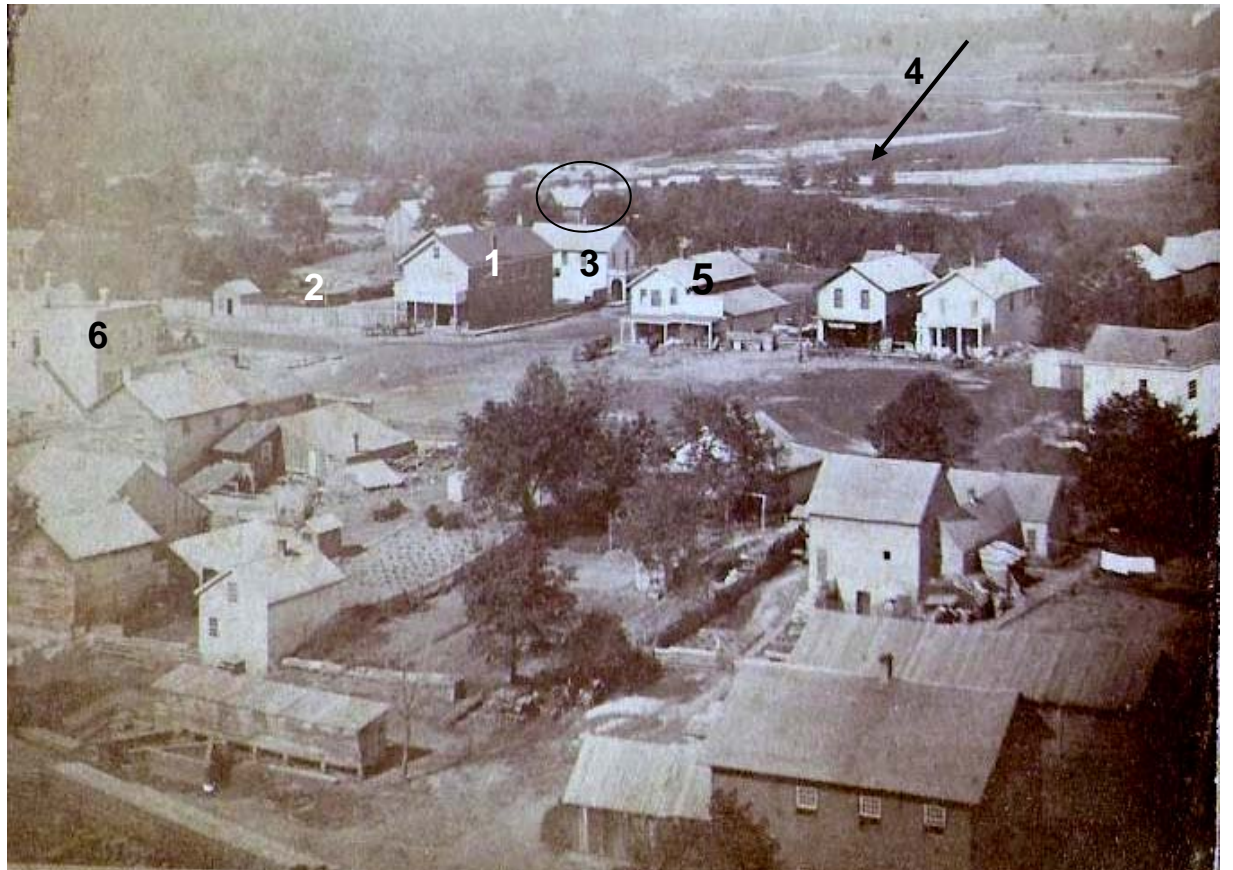
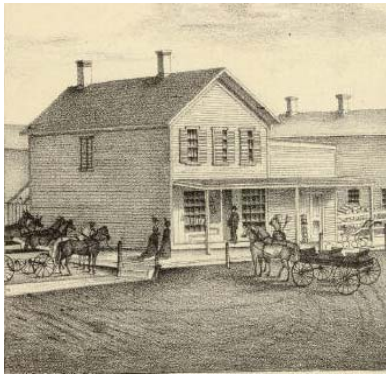
I know I printed the photo on the right almost three years ago, but I pulled it out to look at it again after reading the flood account by George Luce (below)

Notice all the water on the flat in the background. And the small island of trees that is so often mentioned #4 (Near where the depot was). On the lower table is the old Kneeland Store (Philip said it's after the fire) #1. And the small fenced in barnyard (#2) next to it. This photo was taken in 1879 so I'm not sure what (#3) is.

I am not sure what the circled building is in the background behind #3. I think that #6 is what was referred to as the Stone Store (later the Koller Store or Irv Klein's Grocery)

I pulled this sketch from the Snyder-Van Vetchen Atlas-1878. It is of the first Gilbertson - Myhre Store.

It is number 5 in the photo. On the lower right is another photo taken shortly after this one.



**This is sometimes how it works...**

I ran across this personal account by George Luce on the 1866 flood. He was the son of Samuel and Hannah (Gale) Luce who had three children: George, Walter (W.S) and Flora. Sam ran the Galesville Transcript in the 1860's. And W.S. Luce also owned the La Crosse Press before moving to Ludington, MI where he owned the Ludington Daily Sun. George also moved to Ludington, where he died in 1905.

I did have an opportunity to speak with Bill Dorwin in Durand. He is a descendent of Flora Luce Dorwin.

I want to share with you a part of George Luce's descriptive account of that night in July that had a huge effect on the city of Galesville. At the time of the flood, he was 16.

"...It was a cloudburst accompanied by the grandest display of artillery that was ever witnessed in this region" is how he begins, comparing it to a combination of a cyclone and an electrical storm.

He wrote, "The storm burst with great fury around 12 o'clock at night. It had been gathering for some hours. The incessant flashes and distant muttering in the early evening gave warning of an ordinary storm. With a crash, a continuous sheet of flame, a roar of wind and sheets of water it seemed possessed of a fury that no human habitation could withstand. Buildings swayed and shook. The earth vibrated with the heavy shocks. It was light as day a good part of the night.

Everybody nearly had a fit, not knowing but the next moment buildings would either be struck by lightning or sail away on the wings of the wind."

The worst was over around 4am when he noted that in the lull he heard the "splash of horses hoofs. A cry of danger rent the air as Bartlett, the Paul Revere of the night, swept past. A flash revealed a horse at full speed carrying its rider to warn the neighbors to come to the rescue of imperiled citizens Instantly every male resident was out of bed and into his clothes.

George went on to say that when he ran into the street it was water half-way up to his knees and "lightening revealed what looked like a sea reaching to the surrounding hills". He stated that everyone knew the danger was the mill dam, located near the jail.

*(the jail was located on the East end of what was once Beaver Builders. The mill across the creek in "Tuckerville", just off of Buttermilk Alley. (Another term I learned from Gibby Rall).*

The dam broke. At that time the 'flat' was the business section of town. Continuing his description,

"So sudden was the disaster that many were caught. The seething waters were hurled against the frame structures and one by one they were engulfed. Crashing timbers, the jar of floodwood, as great trees were borne along like battering rams to the work of destruction. Buildings collapsed and soon the screams of women mingled with the roar and din. Cries of help came across in the darkness and it seemed that loss of life was being added to the great calamity."

George was riding on the horse with Barlett, as they tried to reach the hotel.

That hotel being located approximately where the brick house stands on Mill Road; the one that belonged to Bud Brown, and now is the home of David Olsen.

However, the current quickly became too strong for the horse, especially with it's double burden, and he was told by Bartlett that he'd have to slide off.

He wrote that although the water was only waste deep, no man could stand in the current and he was "tossed and spun around and punched in the ribs by roots and rubbish" but was finally saved by grabbing a hold of a fence post.

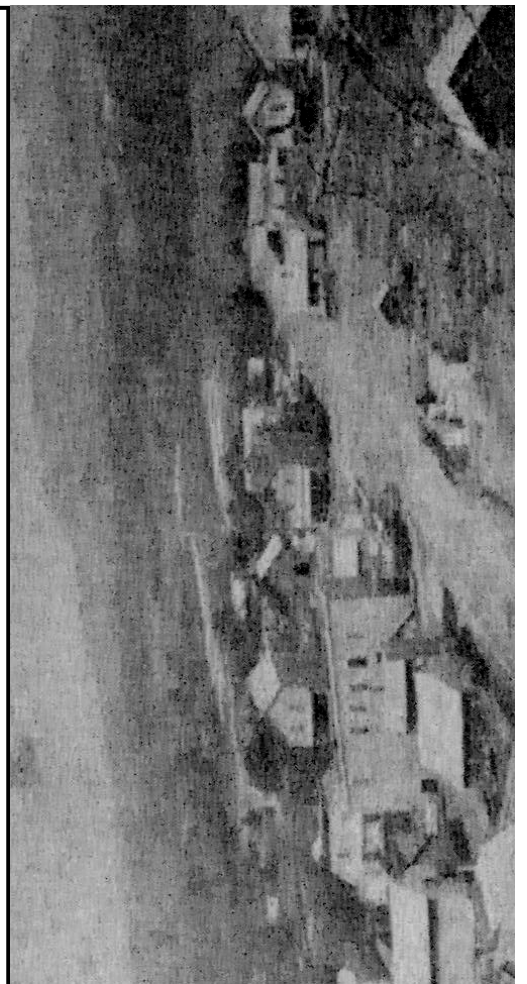
The light of dawn revealed the collapsed walls of buildings, the "raging water from bluff to bluff", wrecked homes scattered for miles, some lots "scooped out of existence .... Great pillars of rock and earth and roots came crashing down with a rush and roar that were frightful...land slides were visible in every direction."

There was not one life lost in Galesville that night.

When Mr. George Luce wrote his story many years later, he said that one could still see the effects of the storm, where "huge ruptures in the hills were partially grown over with vegetation."

He considered the rebuilding a blessing in disguise and felt it contributed to the growth of the city as many of the businesses moved up to the lower table.

The above photo and the one on the right are stereoscopes of Galesville courtesy of the Herbert Lyon collection at the Galesville Public Library.



**Patient Focused...Quality Care**  
**TREMPEALEAU**  
*Family*  
**CHIROPRACTIC**  
Provider for Most Major Health Plans  
• Auto Injury • Work Injury  
• Nutritional Counseling • Sports Injury  
• Massage • On-Site X-Ray  
• Prenatal/Baby Care • Rehab  
Dr. David Heiden  
Heiden Chiropractic Inc.  
2 Locations  
Open 6 Days/Week  
Trempealeau Independence  
(800) 534-6090 (715) 985-2500  
Chase St. Washington St.